



**SHINING  
STAR**



2 in 1



**SHINING  
STAR**

# INTRODUCTION

Product specifications

01 FRONT COVER

02 CATALOG

03 MAIN  
ADVANTAGES

04 OTHER  
ADVANTAGES

05 SPECIFICATIONS

06 OPTICAL  
FIGURE

07 DIMENTION  
FIGURE

08 MORE DETAILS

09 CORE  
TECHNOLOGY

10 PACKAGE DETAIL

11 APPLICATION



Solar Wall Light

## Product Advantage

Brighter & More durable  
Use as wall light & portable light  
Workable at -10°C to 60°C  
Lighting time more than 10+ nights



**MORE BRIGHTER &  
MORE DURABLE**



## Product Advantage

2 in 1

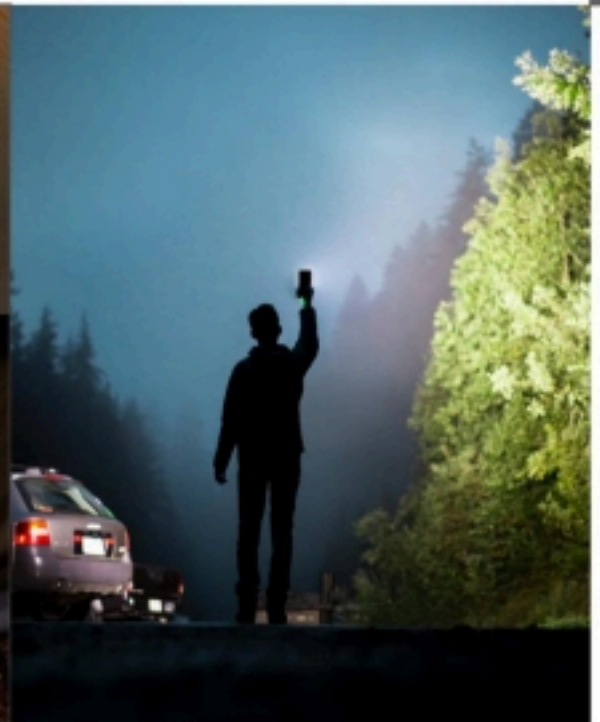
Solar PIR wall lighting /  
Portable lighting



1000LM & Removeable



**DETACHABLE  
AND MORE PORTABLE**



**Item: SWL-15PL**

Light Brightness	1000 lumens
------------------	-------------

**Solar panel**

Power	Epoxy Mono-Crystalline, 4.86V/1W
-------	----------------------------------

**Li-ion battery**

Capacity	3.7V 7.4WH 2AH/PC
----------	-------------------

Charging/Discharging Temp	-0~45°C/-20~+60°C
---------------------------	-------------------

Charging Time	10H
---------------	-----

LED (OSRAM)	2835 40pcs
-------------	------------

Color Temp	4000K, Ra 80+
------------	---------------

Efficiency	190lm/W
------------	---------

UV LED	-
--------	---

**Performance**

Lighting Time in Rainyday	>10days
---------------------------	---------

Control Mode	Button Switch, ON/OFF Long Press 1.5s
--------------	---------------------------------------

Lighting Mode	Short press the button for changing the wall light mode M1(Red): 50lm+PIR 10S handheld (remove solar panel): 100lm M2(Green): 0+PIR 10S handheld (remove solar panel): 200lm M3(Orange): 200lm for 6hrs
---------------	--

	Short press the button for changing the portable light mode M1: 100lm M2: 200lm
--	---

Mode Indication	M1: Red, M2: Green, M3: Orange
-----------------	--------------------------------

Capacity Indication	Green: ≥70%; Orange: 30%~70%; Red: < 30%
---------------------	--

PIR	120°, >5m
-----	-----------

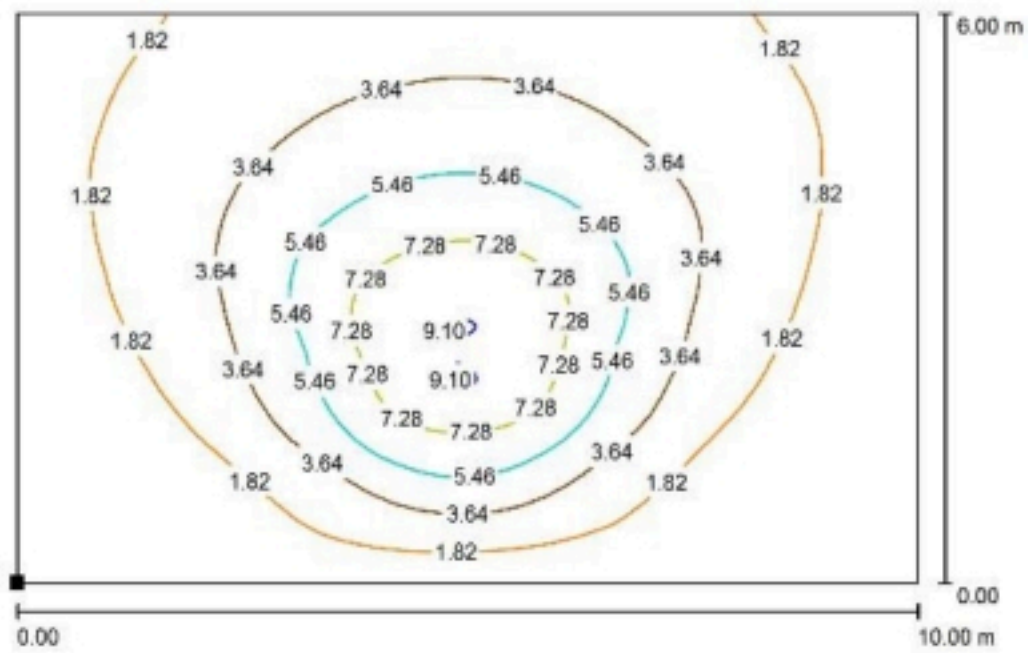
Core technology	ALS 2.4 / TCS 1.0
-----------------	-------------------

Solar Panel Autoclean	-
-----------------------	---

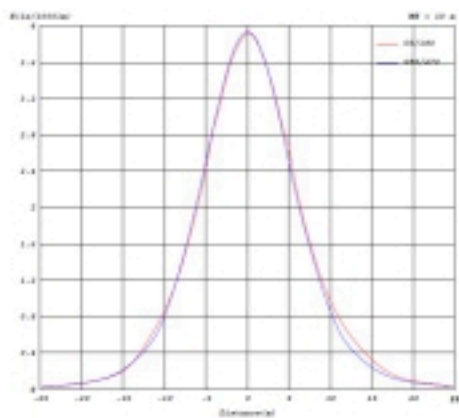
IP	IP65
----	------

Install Height	3m
----------------	----

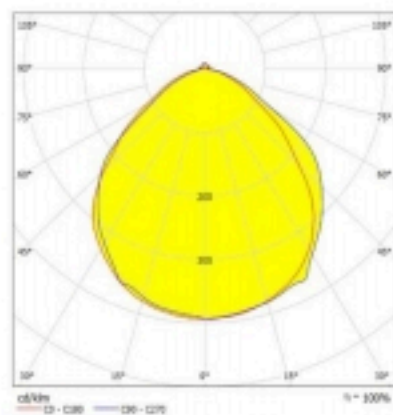
Road Simulated Diagram

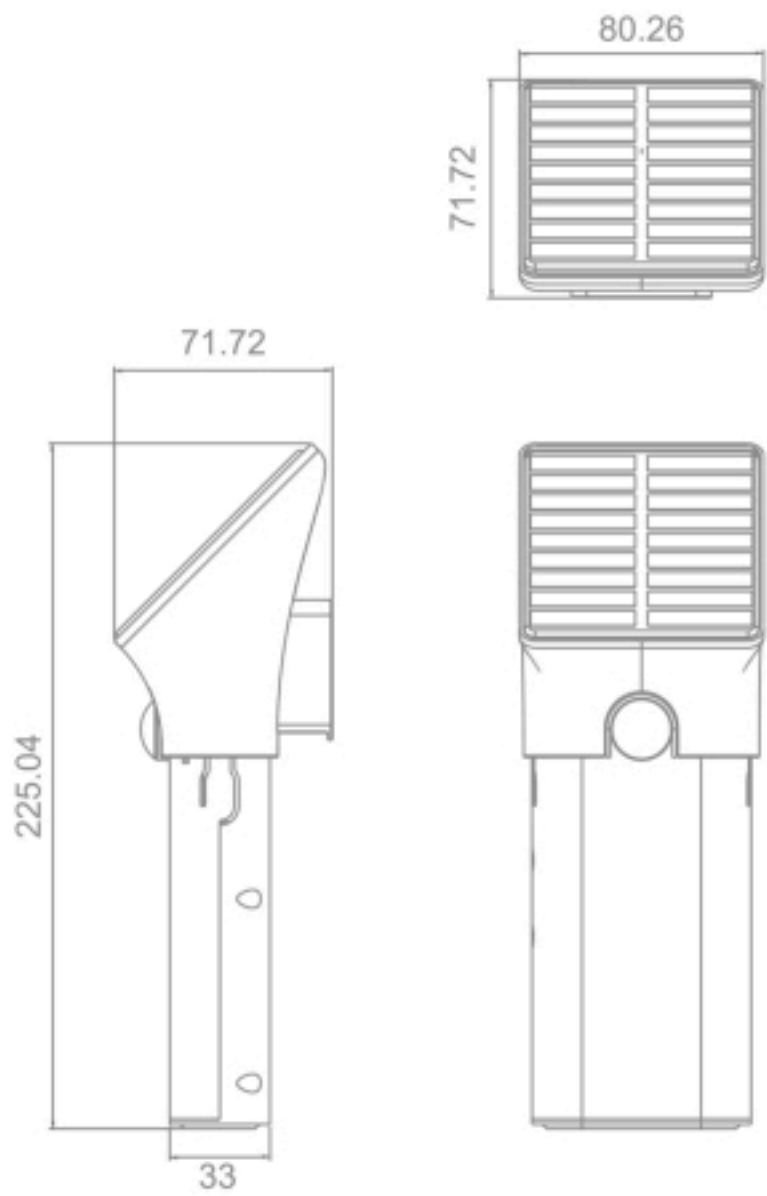


Illumination Curve

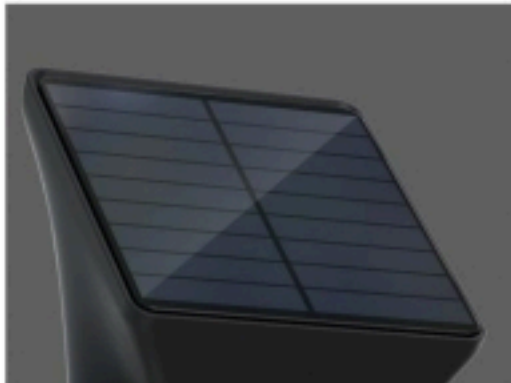
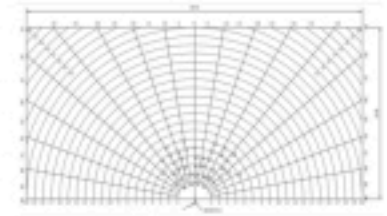


Luminance Distribution

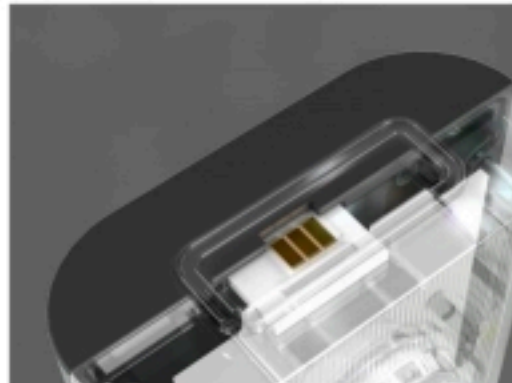




Advantage in every detail



Monocrystalline  
Solar Charging Efficiency :>21%



Charging



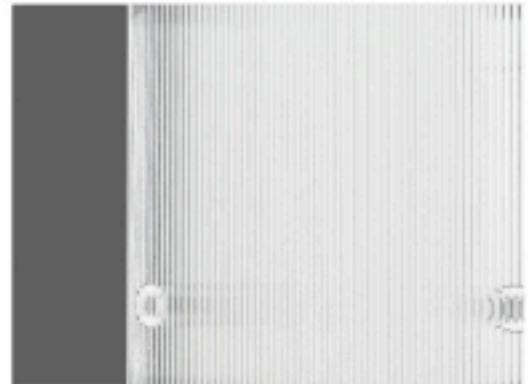
High sensitivity  
PIR sensor



Switch



Back details

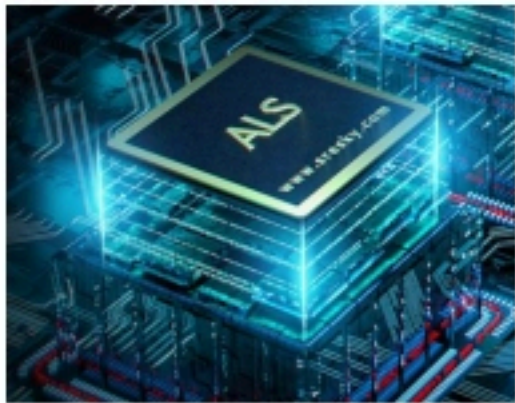


High lumen LEDs  
190lm/W



A Great Company should always pay the highest attention to the every detail design , and the craftsmanship spirit should be filled in the whole design process and mass production.

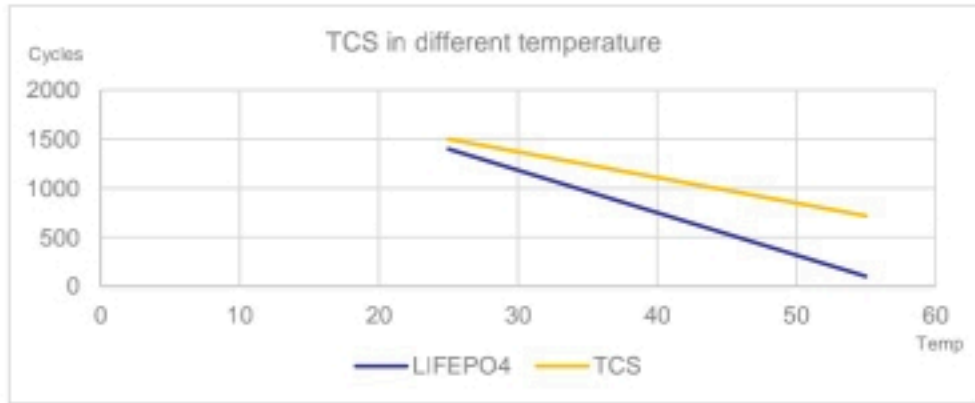


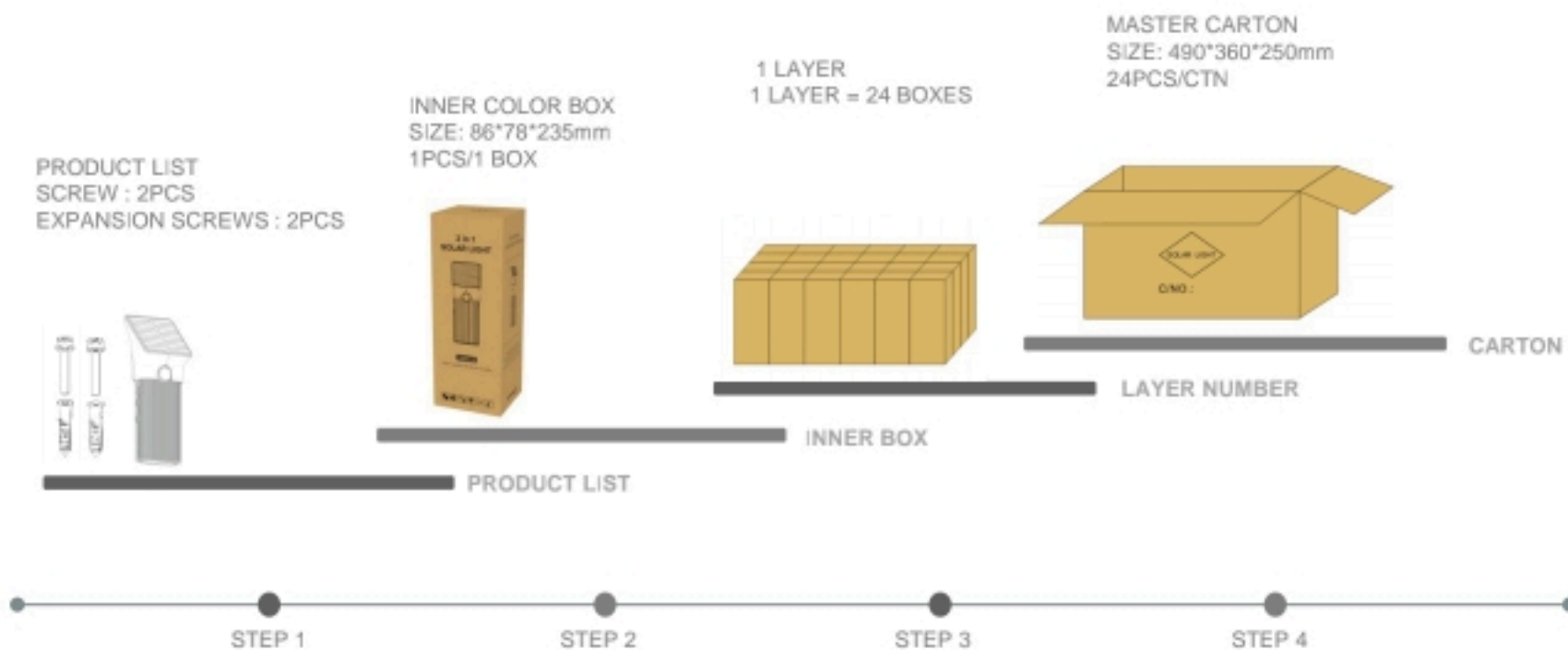


ADVANTAGE OF ALS



ADVANTAGE OF TCS





MODEL NO.	PACKING METHOD	PCS/CTN	QTY(PCS)	CTN QTY	CARTON SIZE(MM)	N.W.(KG)	G.W.(KG)
SWL-15PL	INNER BOX	1	1	1	86*78*235	0.5	0.55
	CARTON	24	24	1	490*360*250	12	12.5

Net weight and gross weight are for reference only

S / O / L / A / R / L / I / G / H / T

THANKS  
VERY  
MUCH